



 ROBINSONS

Woolpack Close

Dunstable, LU6 3BF

£725,000

- FIVE BEDROOM DETACHED FAMILY HOME
- FEATURES A DOUBLE GARAGE & DRIVEWAY
- SPACIOUS EN-SUITE WITH WALK IN SHOWER & BATH
- OFF ROAD PARKING FOR UP TO FIVE CARS
- IMMACULATELY PRESENTED
- OPEN-PLAN KITCHEN WITH STYLISH CENTRAL ISLAND
- BOUTIQUE-STYLE DOWNSTAIRS W/C
- HIGHLY DESIRABLE WOOLPACK CLOSE
- LANDSCAPED GARDEN WITH PATIO & DECKING
- BESPOKE FEATURES AND DESIGN THROUGHOUT

Floor Plan

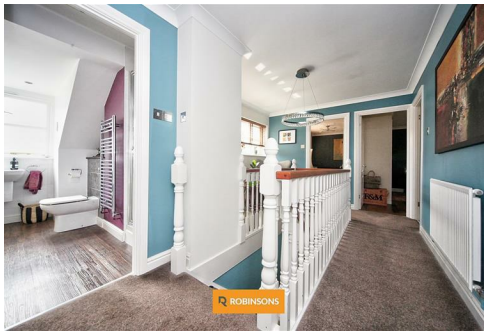
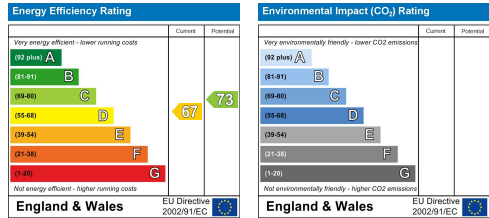


Plan produced by Woodside Photography
Floorplan for illustration purposes only and all measurements are approximate

Area Map



Energy Efficiency Graph



These particulars, whilst believed to be accurate are set out as a general outline only for guidance and do not constitute any part of an offer or contract. Intending purchasers should not rely on them as statements of representation of fact, but must satisfy themselves by inspection or otherwise as to their accuracy. No person in this firms employment has the authority to make or give any representation or warranty in respect of the property.

20 West Street, Dunstable,
Bedfordshire, LU6 1SX

20 West Street, Dunstable,
Bedfordshire, LU6 1SX

robinsons-estates.co.uk
sales@robinsons-estates.co.uk